



# UNI-MAT™ All Purpose Entry Mats



## UNI-MAT

- Uni-Mat has turned out to be one of the most versatile products we've ever manufactured, used in manufacturing, convenience & grocery store, kitchen and food service applications. Beverage station mat for drink stations.
- Uni-Mat is easy to handle – at 17 lbs. and 3/8" thick, yet holds securely in-place due to the large textured bar sub-surface pattern. A similar bar surface pattern on the surface provides non-slip footing.
- A key ingredient of Uni-Mat is tree-derived rubber, harvested from the Para rubber tree. It is beneficial to the environment, it is an ecologically sustainable and renewable resource, supporting the agricultural community and contributes to the maintenance of the global carbon balance in the atmosphere.
- Natural rubber is nature's contribution to the elastomer field and offers the advantages of high resilience, high tensile and tear properties, and good flexing qualities at low temperatures.
- Uni-Mat is offered in Grease-Resistant Black and Grease-Proof Red formulations that stand up to machine cutting fluids, vegetable oils, and animal fats found in industrial and food service operations.

**ENTRANCES,  
SALAD BARS,  
DRINK STATIONS**



Stock No.	Color	Sizes	Thickness	Weight
UM3660B	Black	36" x 60"	1/4"	28.0 lbs.
UM3660R	Red	36" x 60"	1/4"	28.0 lbs.

Thickness 3/8"

# UNI-MAT 3' X 5'

## PROPERTIES - NITRILE RUBBER

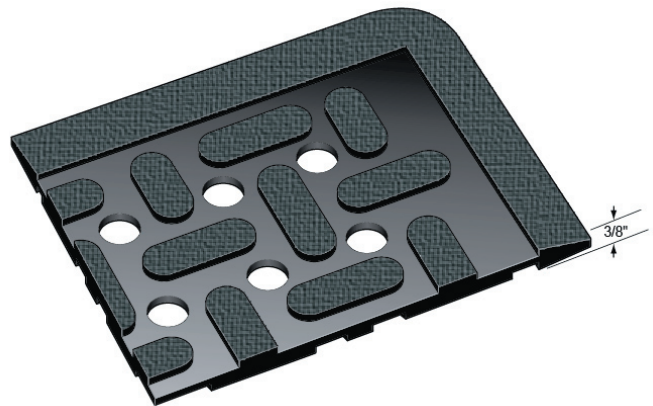
Hardness ISO 868 (°sh)	61 ±5	Elongation ISO 37 (%)	250	±50
Hardness DIN 53505-A (°sh)	61 ±5	Elongation DIN 53504 (%)	250	±50
Hardness ASTM D2240 (°sh)	61 ±5	Elongation ASTM D412 (%)	250	±50
Density ISO 2781 (g/cm3)	1,52±	Abrasion ISO 4649 (mm3)	<300	
Density DIN 53479 (g/cm3)	±0,02	Abrasion DIN 53504 (mm3)	<300	
Oil resistance	Y	Abrasion ASTM D1630-83 (mm3)	<300	
Tensile strength ISO 37 (psi)	994	±426		
Tensile strength DIN 53504 (psi)	994	±426		
Tensile strength ASTM D412 (psi)	994	±426		

Uni-Mat 3/8" Thick

### WEIGHT

3'X5' Drain Thru

17 LBS



A  
CWF Flooring, Inc.  
Company